



VERMONT SOUTH BOWLING CLUB

Livingstone Road, Vermont South

Website: www.vermontsouthclub.com.au

JACK ATTACK INVITATION

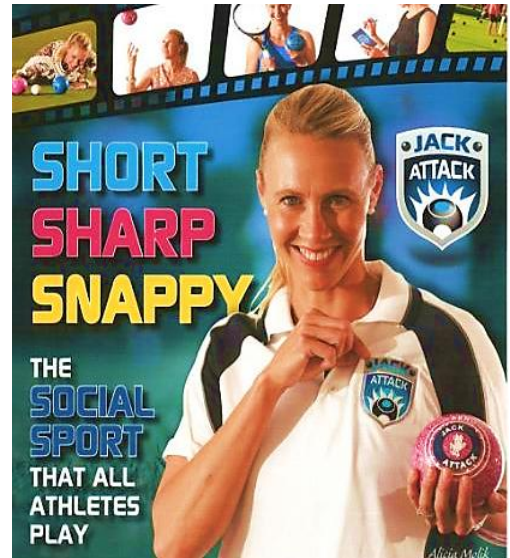
Where: Vermont South Bowling Club
Livingstone Road, Vermont South
(opposite Livingstone Primary School)

When: Wednesday evenings 6pm-8pm
29 October 2025 to 3 December 2025

Cost: \$180 per team (all players, full season)

Team Prizes: Season winner: \$120
Season runner-up: \$ 60
Season third place: \$ 30
Weekly winners: Prizes

- ✓ **SHORT 6 WEEK SEASON... STARTS OCT 29th**
- ✓ **WEDNESDAY EVENINGS 6PM - 8PM**
- ✓ **ALL EQUIPMENT SUPPLIED**
- ✓ **NO REQUIREMENT FOR MEMBERSHIP**
- ✓ **PARTICIPATION IS MORE VALUED THAN WINNING**
- ✓ **INVITE FAMILY, FRIENDS & WORKMATES TO MAKE UP A TEAM**



More Information / Conditions of Play (for those interested in the fine details):

- Each team consists of **3 players** and must include at least two players who have not been a registered bowler or bowling member (of any type) of any lawn bowls club or Association since 1st January 2018
- Teams may register more than 3 players to accommodate for absentees and busy working lives.
- Substitutions are allowed during a match at the completion of an end.
- Game format is two-bowl triples, comprising two sets of five ends.
- A one-end sudden death tie breaker set is played if teams win one set each. Coin toss is used to start tie-breaker.
- The winning team of the previous end places the mat and the jack (minimum 21m from mat) and must play the first bowl. (On the first end, toss a coin to decide which team leads.)
- Opposing teams must play alternate bowls but playing sequence within a team can be varied.
- Registered bowlers must not play the last 2 team bowls of any end.
- All players are encouraged to remain at the mat end to ensure the social atmosphere is maintained.
- Scoring is the traditional bowls format where all bowls closer to the jack than any opposition bowl are worth 1 point each.
- Each team can nominate one **power-play** per set. A power-play is where your score is doubled for that end. This must be nominated before the first bowl for that end.
- Jack in the ditch within rink boundaries is in play. Jack out of play is immediately re-spotted on the 'T'
- A bowl that touches the jack and finishes in the ditch within rink boundaries is still in play.
- A total of 6 points is shared between the competing teams each match.
 - Winning a set (excluding tie-breaker set) is worth two set points.
 - A tied set is worth one set point to each team.
 - The team that wins most set points receives two extra points.
- The Season winner shall be the team with the highest points score after the final round of matches. Should teams finish on equal points, the team that scored the higher shot score percentage over the entire season shall be declared the winner.
- The weekly winner is selected randomly from winning team cards.
- All disputes will be decided by the Vermont South Club Jack Attack coordinator and no appeals will be allowed.



Jack Attack Entry Form

Team Name:

Contact Name:

Contact Phone:

Contact Email:

Please submit your entry form and full season payment of \$180 **ASAP** but no later than 22 Oct 2025

Email this form to j.temple.au@gmail.com

For **ONLINE ENTRY** use QR code below or go to <https://forms.gle/eg1aLZYjaU7oGsCT9>

Payment can be made by EFT to:

BSB: **633-000** (Bendigo Bank)

A/c No: **186270237** (Vermont South Club)

Ref: **JA plus Your Team Name**

Additional team members (extras can be added later)

Name	Phone No.	Email address

I have read and agree to comply with the Conditions of Play:

.....

